

Royce' ChocolateWorld MAP

"Royce' Chocolate World" is brought to you by ROYCE', is a chocolate manufacturer in Hokkaido. This chocolate wonderland includes a chocolate factory, museum, shop filled with original products, as well as a bakery! Take a trip to the SWEET world of chocolate!

8 ROYCE' original, fresh baked bread is sold here, including bread with Nama Chocolate inside!



BAKERY

8



Domestic terminal

SHOP

Approx. 200 kinds of original products!
Enjoy shopping in the colorful shop.

An approx. 2m tall bear is waiting for you!



7



7 The shop is filled with various chocolates. Pick up snacks and souvenirs here!



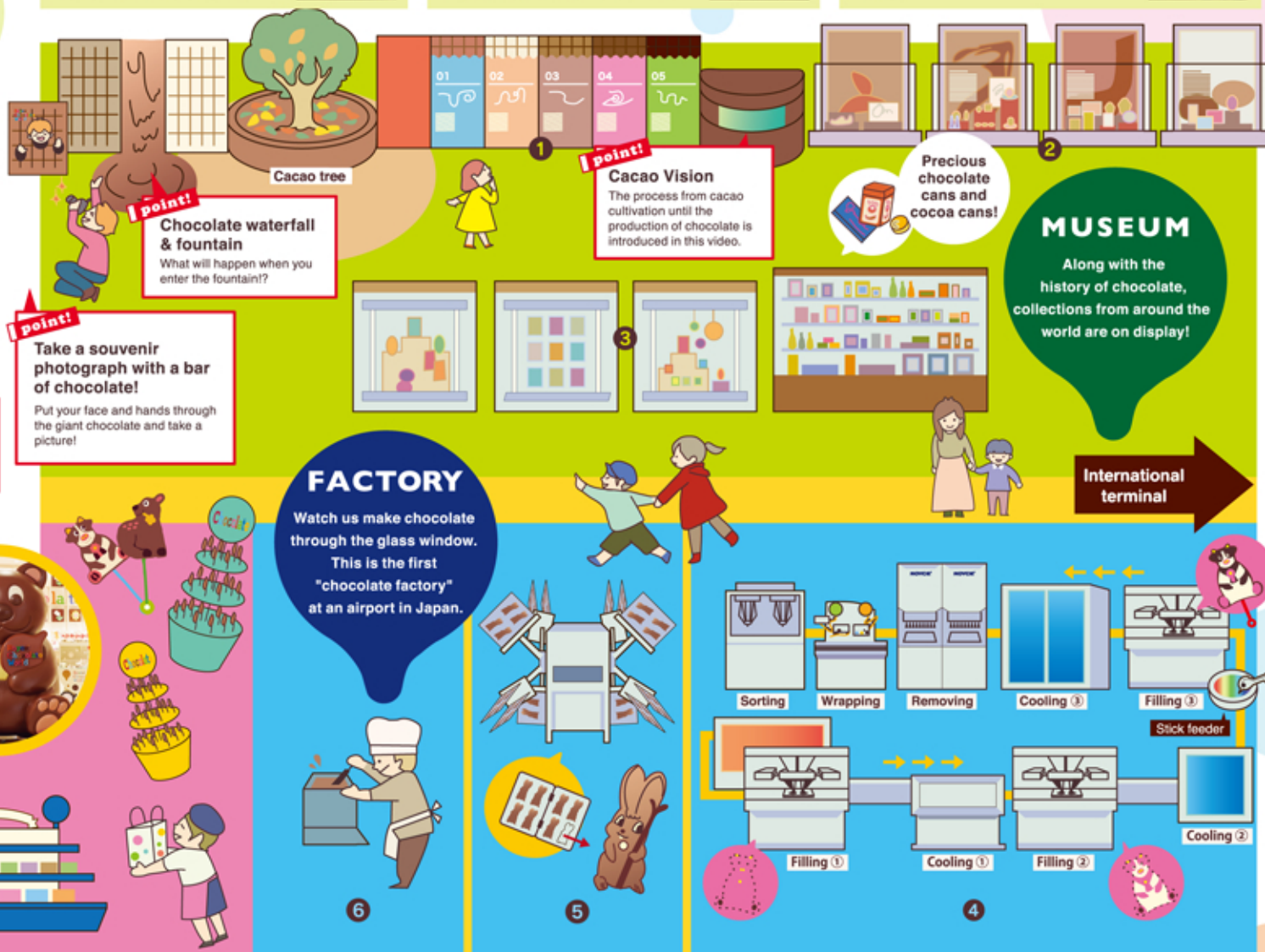
1 The fruit of the cacao tree is the main ingredient of chocolate. But to become chocolate, it must make a long journey.



2 Chocolate originated approx. 4000 years ago! The history of chocolate and its precious resources are introduced here.



3 Enjoy viewing the large collection of cans of cacao from all over the world and various chocolate labels on display.



6 Watch a demonstration by the factory staff. Note the delicate operations only human hands can do.



5 The mold filled with chocolate is spun to create "hollow chocolate", which is filled with air inside.



4 Filling chocolate into the mold. There is also a machine to draw colorful patterns!

