

Royce' ChocolateWorld

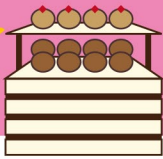
MAP

"Royce' Chocolate World" is brought to you by ROYCE', is a chocolate manufacturer in Hokkaido. This chocolate wonderland includes a chocolate factory, museum, shop filled with original products, as well as a bakery! Take a trip to the SWEET world of chocolate!

8 ROYCE' original, fresh baked bread is sold here, including bread with Nama Chocolate inside!



BAKERY



Domestic terminal



An approx. 2m tall bear is waiting for you!

SHOP

Approx. 100 kinds of original products! Enjoy shopping in the colorful shop.



7 The shop is filled with various chocolates. Pick up snacks and souvenirs here!



6 Watch a demonstration by the factory staff. Note the delicate operations only human hands can do.



5 The mold filled with chocolate is spun to create "hollow chocolate", which is filled with air inside.



4 Filling chocolate into the mold. There is also a machine to draw colorful patterns!



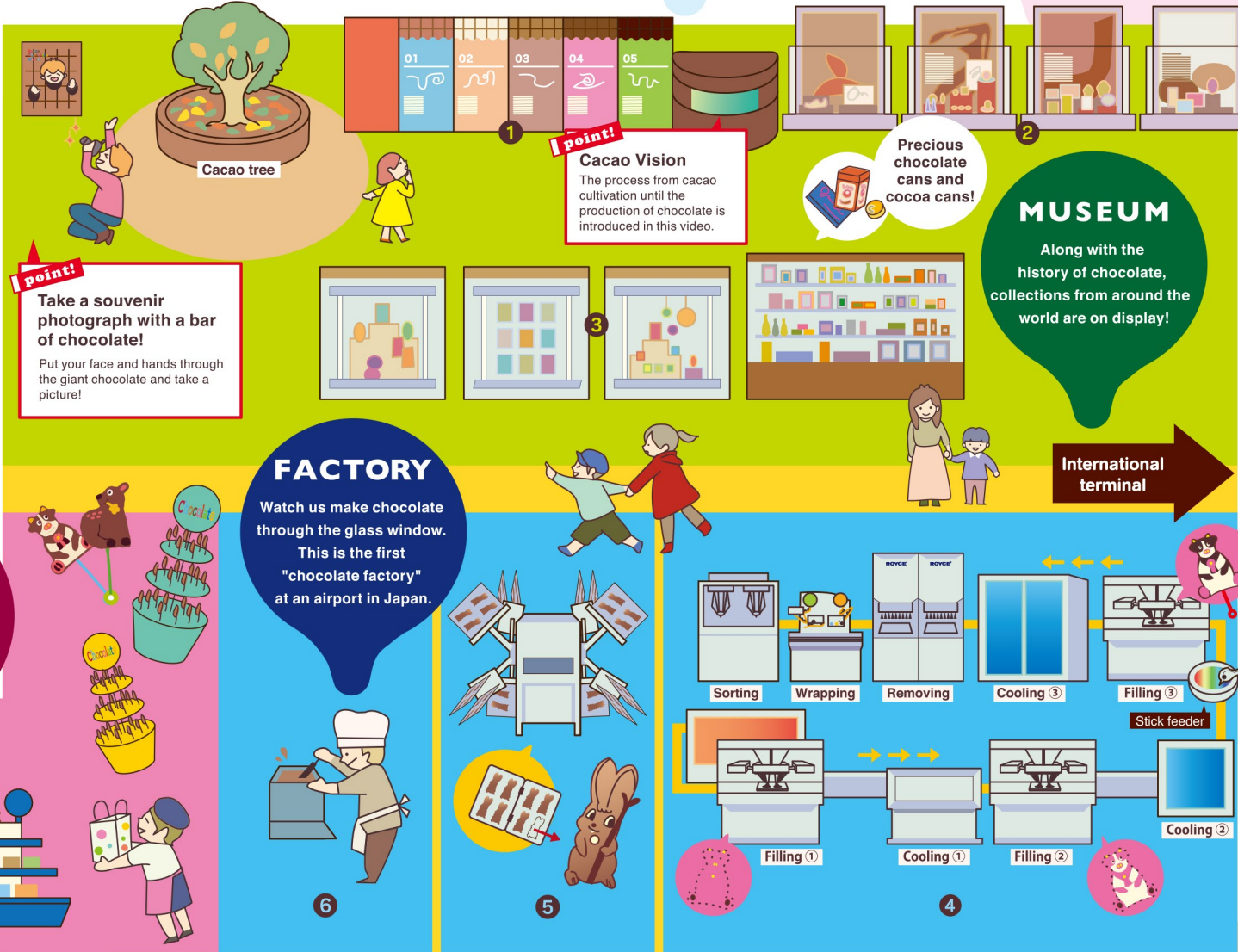
1 The fruit of the cacao tree is the main ingredient of chocolate. But to become chocolate, it must make a long journey.



2 Chocolate originated approx. 4000 years ago! The history of chocolate and its precious resources are introduced here.



3 Enjoy viewing the large collection of cans of cacao from all over the world and various chocolate labels on display.



point! Take a souvenir photograph with a bar of chocolate! Put your face and hands through the giant chocolate and take a picture!

point! Cacao Vision The process from cacao cultivation until the production of chocolate is introduced in this video.

Precious chocolate cans and cocoa cans!

MUSEUM Along with the history of chocolate, collections from around the world are on display!

FACTORY Watch us make chocolate through the glass window. This is the first "chocolate factory" at an airport in Japan.

International terminal

